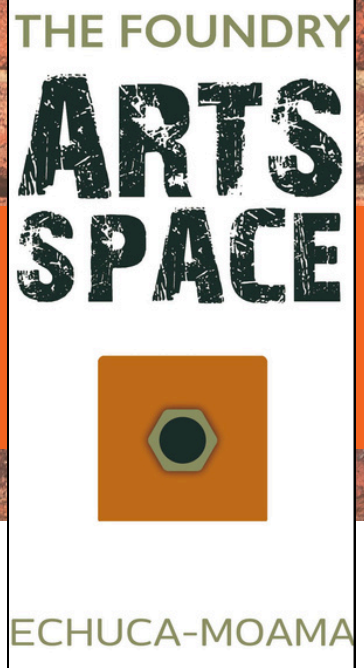


NOV/DEC 2025/JAN 2026

arts news

raising the profile of the arts in the Echuca Moama region



Welcome to the December Newsletter.

What a wonderful year we have had at the Foundry Arts Space. Such interesting and varied artworks from young and old(er) artists. I congratulate all our exhibitors on their artistic talents and thank them for their co-operation before and during the various exhibitions.

The committee have been busy finalizing the 2026 exhibitions programme. We were over subscribed for 2026, which is a lovely problem to have, however it meant we could not accommodate all applicants. Stay tuned for the release of this programme at the opening of the Members Summer exhibition, which starts on December 5th.

I was lucky to be able to visit an art installation called Team Lab Planets in Tokyo and the M+ gallery in Hong Kong on my recent holiday.

Both were very modern, challenging the traditional concepts of art. At Team Lab, there were pieces into which I immersed myself, orchids moving in a hanging forest which reacted to my presence, aerial climbing on colour. At M+, Environments by Women, "Dream Rooms" 1950's-Now. These were so powerful and amazing in their construction, that I had to take a break after 45 minutes. Totally overwhelming but seriously wonderful. If you have the opportunity, I can recommend both.

The Members Summer Exhibition will be accepting entries on Sunday 30th November from 4.30 and Monday December 1st 9.30 to 10.30. I hope to see many members take advantage of this opportunity.

May I take this opportunity to wish all our supporters a Merry Christmas and a Happy New Year. And if Christmas is not your thing, then I hope you can enjoy a break from your usual routine.

Regards,
Judi Lawler



On days of extreme heat, the gallery may close.



2026 FOUNDRY ARTS PRIZE

People interested in assisting the Arts Prize committee will meet very soon with a view to

- establish the committee membership
- discuss budget and sponsorship
- decide on a theme for the Arts Prize
- develop a planning chart for the lead up to the prize.

We do now have a number of systems in place following the last two Arts Prize events - we will just need to review these and allocate resources.

We are looking for some new committee members. Please let me know if you are willing to be involved in assisting with the organisation of the 2026 Arts Prize. Looking forward to meeting with you soon.

Kind regards,
Sue Harrison
0428566107



www.thefoundryartsspace.org.au m: 0475 448 452 e: admin@thefoundryartsspace.org.au



Echuca Moama Photography Club: Oct 24 - Nov 30, 2025



150 turned out to be the perfect amount of works to fill the space. Our exhibitions team curated a wonderful display for our visitors to enjoy. Echuca Moama Photography Club members exhibited an impressive range of styles, sizes and photographic techniques for visitors and enthusiasts to enjoy. Exhibiting photographers ranged from award winning, experienced photographers through to novice photographers. Some had been part of EMPC for a number of years and some for just a few months.

EMPC was appreciative of the opportunity to showcase and sell their photography and remind everyone to watch for the VAPS convention to be held in Echuca Moama in 2026. It will be big!



Harry Sheppard and Roz Harris spoke at the opening night.

WONDERLAND ON THE MURRAY TRAIL MAP

CUSTOMS HOUSE GALLERY
2 LESLIE STREET, ECHUCA

FOR MORE INFO
CONTACT: 0428 889 108

Wonderland Reimagined



Art Exhibition

12 DEC TO 8 MAR

OPEN 10AM UNTIL 4PM
THURSDAY TO MONDAY
EVERYDAY SCHOOL HOLIDAYS

FREE ENTRY

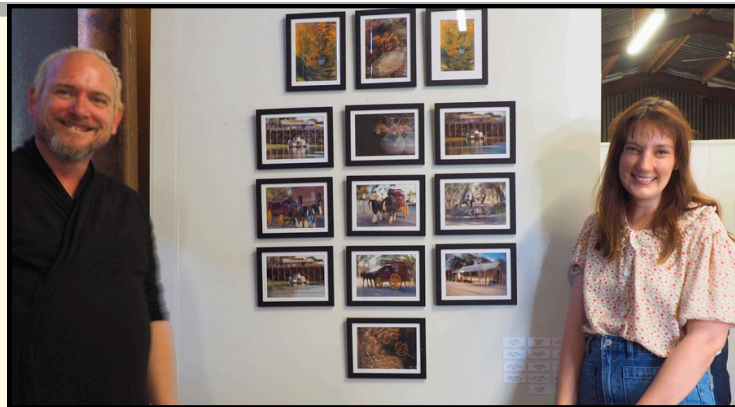




Sponsored by Paramount Cinemas Echuca



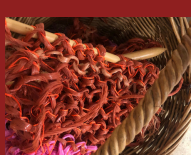
Adam Witchell is in the spotlight this time. Adam voluntarily creates all of the great looking signage for each exhibition, based on the same graphics used for publicity. Enjoy the movies, Adam and Maree!



Graham Hearn, Gavin North, Anna Walsh and Janece Connolly have recently joined The Foundry Arts Space Committee of Management.



Members Make it at The Foundry



Bring whatever you are working on

2nd and 4th Sundays
3pm - 5pm

Contact Jenny 0428 495 497



MEMBERS SUMMER EXHIBITION 5.12.25 - 26.01.26

BOBEN MAMMEN 30.01- 01.03

LEE NELSON & BELDARI POTTERY 06.03 - 29.03

OLIVIA RAZUKI 02.04. - 03.05.

STUDIO ARTS TRAIL - 01.05 - 03.05

LINDEN LANCASTER 08.05. - 08.06.

NAIDOC 12.06. - 12.07.

2006 ART PRIZE 17.07. - 16.08.

TUESDAY JUNCTION 21.08 - 13.09

ANNA WALSH & CAMPASPE YOUTH 18.09- 25.10

GRETYL SCHILLER & MAREE SANTILLA 30.10 - 29.11

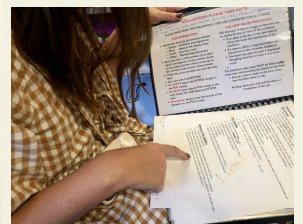
FOUNDRY MEMBERS SUMMER EXHIBITION 04.12.26 - 26.01.27

Interested in
art workshops?
Watch this
space!



JOIN US!

Get involved



Give it a try! Get involved in as small or as large a role as you want. You might sit the 'front of house', help plan or hang an exhibition or workshop, distribute posters, help make labels, serve food at opening nights, help with rosters or the newsletter. Make new social connections.

There are so many jobs! Offer to walk new people through the tasks needed. Set your own hours. Become 'an involved party' - we are very open to new people coming. There will always be someone to help you. Contact us to see how you might become a Foundry member, a committee member or a general volunteer.

THE FOUNDRY ARTS SPACE
ECHUCA-MOAMA
15-17 Murray Esplanade, Echuca
0428 495 497
admin@thefoundryartsspace.org.au

Join The Foundry Movement

- for that feel-good feeling you get knowing you're supporting the arts in the region and helping to keep the doors of our gallery open.
- for early notification of upcoming events, exhibitions and workshops
- for the opportunity to exhibit, free of hiring fees and only 25% commission numerous times during the year.
- and for discounted prices for ticketed events, and workshops.

Come and experience a fusion of captivating arts in an industrial setting in our vibrant community.

Become a member today and unlock exclusive benefits!

only \$30 per year (\$25 concession)

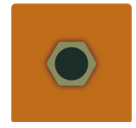
<https://thefoundryartsspace.org.au/membership>



painting/ceramics/textiles
photography/homewares
and much, much more.

THE FOUNDRY

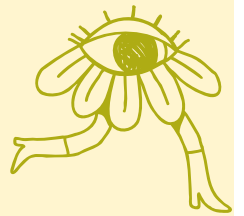
**ARTS
SPACE**



ECHUCA-MOAMA

The Foundry

summer exhibition



opening celebration
friday dec. 5th 6pm



refreshments provided
all welcome

december 5th 2025 -
january 26th 2026



13 - 17 Murray Esplanade, Echuca 0475 448 452 admin@thefoundryartsspace.org.au thefoundryartsspace.org.au

