

1
APR/MAY 2025

arts news

raising the profile of the arts in the Echuca Moama region

Hello fellow art enthusiasts,



Another bumper couple of months for the local art scene; Three exhibitions at The Foundry Arts Space, Ripple Fest featuring events in Rochester and Echuca, the Gargarro Sculpture competition, Bridge Art project celebration of their new "container" and another successful Rochy Murals competition. What more could you ask for????

Expressions of Interest for our 2026 program open on July 1st and close September 30th. We welcome artists from all media and styles to apply. If you've never exhibited before, be brave! You can opt for a single or shared exhibition. Contact details are on our website, and we are happy to answer any queries and assist with the application process.

During Winter, June, July and August, the Foundry will be open 11am to 3pm weekdays and 10am to 4pm weekends. Tuesday closed as usual, except school holidays.

May is volunteer month, so I want to thank all our volunteers who give so generously of their time to keep the Foundry open. We have a dedicated core who volunteer many times each month, plus those who give us a couple of shifts each month. Every bit helps and we would be lost without them. Thank you to the committee of management and the exhibition team, who ensure the business of the Foundry, and the exhibition program are on track.

See you at the Foundry soon,

Judi Lawler

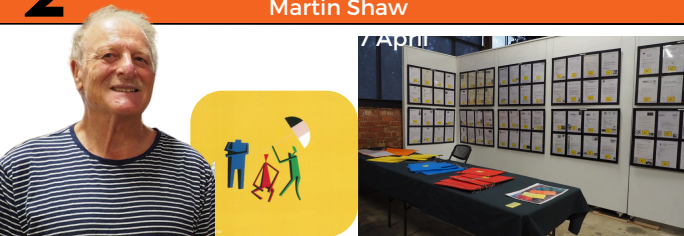


13 - 17 Murray Esplanade, Echuca, 3564

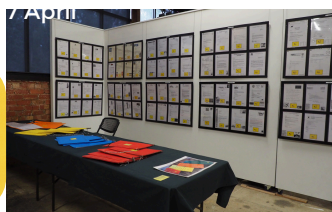
www.thefoundryartsspace.org.au 0475 448 452

thefoundry@email.org.au





Since painting those three mystery figures so many decades ago, the input from observers in terms of guessing and suggesting who those "Three well known Australians" might represent, has given Martin Shaw enormous satisfaction. He expressed his appreciation on seeing the traveling display in The Foundry Arts Space. Thank you to all who responded to it.



"As an artist, it is rare to come across such an amazing space, that is curated and run so professionally by dedicated volunteers.

My work has been hung so beautifully and I'm indebted to them for making the opening such a lovely, lovely event.



There was also room to hang some of my most recent works. A mix of big wet watercolours and pencil drawings, over 1.5 m.

The exhibition will run through the school holidays and ANZAC Day, finishing on Sunday, 27th April.

I hope you can make a day of it and enjoy some beautiful food and walks by the mighty Murray and Campaspe rivers."

Sarah Wallace-Smith

<https://www.instagram.com/art.onview/>



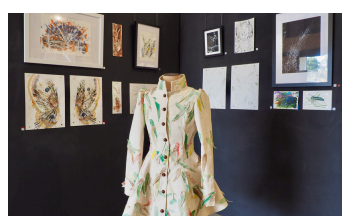
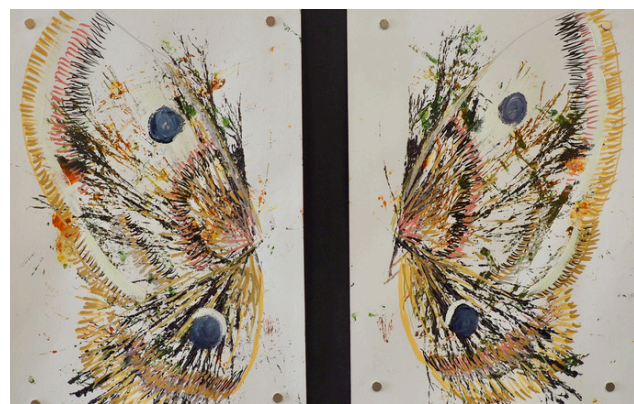
Ripple Fest Youth Arts Exhibition - "Unearthed"

2 - 25 May, 2025.



In workshops, Annalise taught how to make a zine from one piece of paper. After a walk outside the Pump House, Annalise and Ruby challenged the young artists to use their collected items instead of paint brushes to create an artwork. Jesse's workshops encouraged the use of biro then pieces of collected landscape. Ellen's workshops introduced 'blind contour drawing' and the artists collaborated on each other's drawings.

Unearthed was the youth arts exhibition by Ripple Fest & Council's Youth Action Group (YAG) & The Foundry Arts Space, "Unearthed" showcased new works and emerging voices shaping the future of art in the region. Featuring young artists Ayden, Cara, Elijah, Emily, Olivia, Saylah and Shepard, and VET Students from Echuca College, mentored by artists Ruby Wyatt-Carter, Annelise Henderson, Ellen Lee, and Jesse Munzel.



Our gallery provided space which inspired conversation, creativity and community connection.



Ruby led the VET Art students from Echuca College on how to use cardboard layers to create a landscape.



Ripple Fest

Unearthed: Music Sesh closing

Ripple Fest made full use of the whole arts precinct

May 30 - June 29, 2025



"I've studied Sumi-e painting in Japan and now both of my cultures are fusing together to create an unique style and event." Isabelle Kawai Vincent

"Meet Kimoko, the mischievous Japanese doll, and Hera, the Goddess of Women, and acknowledgement of the resilience and courage of motherhood.

To immerse you into my fusion world of my Japanese and Australian heritage, I conducted a live painting performance on opening night.

TRADITIONAL SUMI-E INK PAINTING WORKSHOP
FOUNDRY ART SPACE, ECHUCA

SATURDAY JUNE 21 4:30-6:30PM

\$80 PER PERSON

INCLUDING JAPANESE ART MATERIALS

Sumi-e is a simple, yet elegant art form handed down to Japan from China. Artists use a minimal amount of brush strokes to create subtle ink paintings to capture the essence of the subject.

You will learn how to prepare your own ink using a Sumi-e ink stick and stone, and brush techniques to create traditional Japanese ink painting (Sumi-e) on rice paper. Also, you will learn how to capture the essence of objects from nature, and express them with your interpretation.



Isabelle has completed a sumi-e painting course with the International Sumi-e Association and acquired an Encouragement award

FOR MORE INFORMATION AND BOOKINGS



Bookings are now open for a traditional Sumi-e ink painting workshop on Saturday 21 June, 2025."

Gallery 2 - "Members Gallery"

May 30 - June 29, 2025

MEMBERS GALLERY @THE FOUNDRY

painting to sculpture and everything in between

FOR MEMBERS WHO WISH TO EXHIBIT, DISPLAY AND SELL THEIR MOST RECENT ARTWORK.
THERE WILL BE MORE 2025 DATES ANNOUNCED. CONTACT JENNY TURNER, 0428495497



THE FOUNDRY
ARTS SPACE



ECHUCA-MOAMA

13 - 17 Murray Esplanade, Echuca, 3564

0475 448 452

thefoundry@mai.org.au

MEMBERSHIP RENEWALS ARE DUE!

01/07/25 - 30/06/26

**FULL - \$30
CONCESSION - \$25**

Payments can be made at the
Foundry Arts Space
EFTPOS facility available

OR Pay online via website
<https://thefoundryartspace.org.au/membership-2/>

**new and renewing
members welcome**



**I HAVE
SOMETHING
TO SAY** **GAVIN NORTH**



**OPENING NIGHT
8TH AUGUST 6PM**

- SEPT 14TH 2025

13-17 Murray Esplanade, Echuca



WARNING
THIS EXHIBITION
CONTAINS EXPLICIT
CONTENT WHICH MAY
OFFEND

ALL WELCOME - complimentary drink and nibbles on arrival.

DETAIL: THE ADDITIONS USED TO GET AWAY FROM YOU



13 - 17 Murray Esplanade, Echuca, 3564 - 0475 448 452 - thefoundry@mai.org.au





**Opening night Friday 4th July
6.00pm - All are welcome.**

Enjoy an unforgettable night of
art, dance, song, storytelling and
fabulous food.

Njernda - To know our living culture

Join us as we celebrate the 2025 NAIDOC theme, "The next generation - strength, vision and legacy. Come celebrate our past, present and future through the strength of our women artists. This powerful exhibition honours our women from many clan groups and Nations. Women who carry ancient traditions forward through their craft, and boldly express contemporary culture using fibres, feathers, fabric and fur.



Person in the spotlight

Julie Spiers

While it's unlikely you'll see her at 'front of house', Julie Spiers volunteers tirelessly behind the scenes. Julie is a committee member, catering guru and chief bar person on opening nights. She ensures that the Foundry building is cleaned and well presented for events. THANK YOU Julie - you are appreciated!



Volunteers names are needed for a 'back-up list' so our admin can make an emergency call out when necessary. If you are 'sometimes' available, please let Andrea know. Phone 0475448452 or email thefoundry@emai.org.au

THE FOUNDRY
ARTS
SPACE



ECHUCA-MOAMA

13 - 17 Murray Espl.
Echuca, VIC.
thefoundry@emai.org.au
0475 448 452

**EXPRESSIONS
OF INTEREST**

NOW OPEN

2026



INFORMATION AND APPLICATION
FORMS AVAILABLE
ON OUR WEBSITE
THEFOUNDRYARTSSPACE.ORG.AU

"MAKE IT"

Come and join our friendly, informal group one Sunday afternoon! Bring whatever you're making; new projects or works in progress. Stay for a chat, share ideas and join us for a drink. Gold coin donation.

Jenny 0428495497
2nd & 4th Sundays 3-5pm.

2025 EXHIBITION CALENDAR

JAN 31 - FEB 23: OSMOSIS KATHLEEN WATSON, JOAN STEVENS, HEATHER TURNER & JESS ZIGETHY, GALLERY 1

FEB 22-23: CAMPASPE ARTISTS STUDIO TRAIL ELIZABETH JAWORSKI, PENNY SILVER & KATHLEEN WATSON, GALLERY 2

FEB 28 - MAR 23: ADDICTOGENIC LANDSCAPES KRISTEN DYER

MAR 28 - APR 27: WAR DOGS - THEY ALSO SERVED SARAH WALLACE SMITH, GALLERY 1

3 WELL KNOWN AUSTRALIANS TRAVELLING EXHIBITION, GALLERY 2

MAY 2 - 25: RIPPLE FEST CAMPASPE SHIRE YOUTH ARTS FESTIVAL

MAY 30 - JUN 29: GIRLS, GODDESSES, GREATNESS ISABELLE KAWAI VINCENT

JUL 4 - AUG 3: ABORIGINAL COMMUNITY ART EXHIBITION NAIDOC

AUG 8 - SEP 14: WHERE DO ALL THE OWLS GO TO DREAM? OLIVIA LAWTON

I HAVE SOMETHING TO SAY GAVIN NORTH

SEP 19 - OCT 19: COMING HOME GRAHAM HEARN

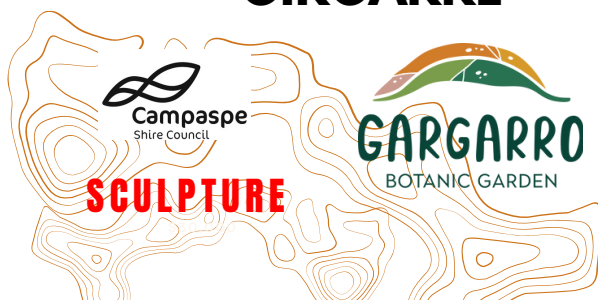
OCT 24 - NOV 30: 2025 OUR VISION ECHUCA MOAMA PHOTOGRAPHY CLUB

DEC 5 - JAN 26: MEMBERS ART MARKET

Find details on the website:
thefoundryartsspace.org.au

Submit EOIs between 1 July - 30
Sept, 2025 for the
**Foundry 2026 exhibition
calendar.**

GIRGARRE



ANNOUNCEMENT COMING SOON

The selection process for a sculptor has concluded for the installation at Gargarro Botanic Garden!

ROCHESTER



Rochester Mural Festival committee is asking for help planning and running its 2026 festival.

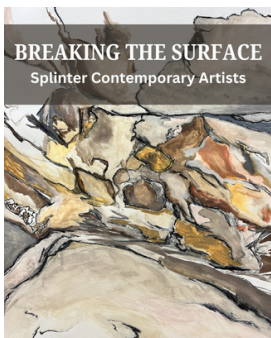
Interested? contact:
president@rochesterbusinessnetwork.com.au



KYABRAM



Michael Hammer's beautiful art quilts are now on show at the town hall. Textile art lovers will not want to miss this!



Splinter Contemporary Artists have explored what lies below the surface at Dookie Quarry. We have dug up local clay and created ceramic works, installations, sculptures and paintings that investigate this underground world.

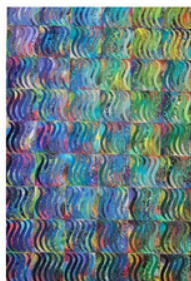
Your visit to this exhibition will open up a new world - the one beneath our feet." Showing until 2 August at the Kyabram Town Hall. Open Monday to Saturday from 10am to 4pm.

MARGARET MCDONALD – TEXTILE ART

“CONNECTED BUT DIFFERENT”

Exhibition Opens 2nd June To 31st July

Connected but Different is a collection of recently finished quilts (mostly since 2018) with the addition of a few favourites. The collection represents the different styles of quilts that Margaret creates. Her quilts are connected by traditional techniques and block designs/repeats but are often very different in scale and colour. Her ongoing search for the achievement of luminosity in fabric choices is supported by fabrics in every possible colour, tint and tone.



JUNE IN KYABRAM TOWN HALL GALLERY

RAYMOND HILL – ART “DON’T FENCE ME IN”

Kialla West based Plein-Air Painter

Exhibiting in the Kyabram Town Hall Gallery from 2nd June to 31st July



LEE NELSON

"Lee's artist journey continues..."

Lee has always used art to learn and enhance his skills in communication and self-expression. He exhibited his artwork in 2022 at this gallery. Since then, Lee has continued to work with his art teacher Tess and would love to share his growing skills as he learns different ways of expressing himself. He, still, loves to sell his artwork and is becoming more self-confident as an artist.

