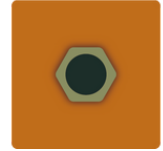


# arts news

raising the profile of the arts in the Echuca Moama region



## chair report

The big story for EMAI and The Foundry during the past few weeks since I last sat down (I am the chair after all) and brought you up to date with the goings on at The Foundry and with EMAI, was the successful launch of the Arts Prize. Through a sterling effort of the team, we were all treated to a terrific event and exhibition opening on July 22nd. The exhibition that followed during the next 3 weeks broke all attendance records of over 1,100 visitations and over \$10,000 worth of art sales. Now we have an eclectic exhibition "Painted on Smile" by the members of the Tuesday Junction group of local artists who have been meeting to discuss and exchange ideas on their art practices for nearly 2 decades. The eclectic range of ideas have fruitfully come into being at the exhibition in a variety of media and materials from the sophisticated to found objects. Another successful and at times challenging exhibition at The Foundry.

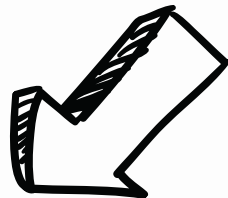
We are now starting the planning process for the 2023 exhibition program. Invitations to submit an expression of interest are out and all artistic expression of whatever genre are encouraged to submit. Invitations close at the end of September.


We have been able to actively engage with Campaspe Council through our recently appointed Community Development Officer for our region, Declan Napier who has been providing active assistance to our requests. Through her, we have an agreement to install a small commercial dishwasher in the kitchen to improve the sanitising and speed up the washing of glasses and items used in openings and other events. No longer a few volunteers having to stay back at the end of openings with their hands in scalding water! Another completed upgrade approved by council has been the installation of a 15-amp power outlet on the front of the building adjacent to the park and already put to use for the Arts Prize opening and the Blues Festival.

September 15 will be the EMAI Inc. Annual General Meeting to be held at The Foundry at 7pm. Your committee members are all standing again, but we would welcome new members to join to share in the pleasure of actively encouraging the arts in our region; remember, "the arts are good for your health". We look forward to seeing as many as possible at the AGM to share in ideas and thinking about our future direction over refreshments at the conclusion of the meeting..

Wishing all a fruitful Spring,

Tim Smallwood FFCSI MDIA





**Notice of Annual General Meeting**

Thursday 15th September 2022  
at 7pm  
The Foundry Arts Space  
13-17 Murray Esplanade  
Echuca

A surprise, inclusive art activity will  
be on offer at this event. Open to  
everyone!  
(refreshments provided)

Please contact Admin. with any enquiries  
thefoundry@emai.org.au or phone 0475 448 452



# PAINTED ON SMILE

## TUESDAY JUNCTION

### EXHIBITING ARTISTS

ROBYN BERRY ANNE CHURCHES JILL KENLEY  
ANNE MAWSON JAN MOLLUSO BRONWYN MORTON  
PENNY SILVER REBECCA WELLS KERRY WILLIAMS

This current exhibition by the Tuesday Junction artists features a wide variety of art ranging from works on paper (drawing and printmaking), to ceramics, textiles and paintings. All works are for sale so make sure you grab a catalogue to find out a bit more about your favourite pieces. Also prepare to spend some time marveling at the totem poles as you make your way around the exhibition space. These are collaborative pieces with each artist creating a contribution without prior knowledge of what the other artists were up to.

Tuesday Junction art group have been actively creating for over 17 years. Over that time they have been getting together weekly for art and conversation while supporting each other in individual and collaborative creative projects. They have exhibited annually in a variety of locations across Echuca ranging from empty rental spaces, restaurants and cafes to art galleries. The group is made up of artists from different backgrounds and experiences who work in a range of mediums and styles but who also work incredibly well collaboratively. What binds this group of artists together is the joy they find in the process of creating art.



Clockwise from top left: Jan Molluso, Robyn Berry, Anne Mawson, Penny Silver, Kerry Williams, Rebecca Wells, Bronwyn Morton & Jill Kenley. Absent: Anne Churches



## MOVIE LOVERS

Tickets  
\$13.50

LIMITED SCREENINGS FROM SEPT.

### MURDER PARTY

Prepare for the most delicious, devious and most dazzling murder mystery of this, or any other year. Murder Party is a chic and stylish farce that gives a cheeky nod to the global smash Knives Out.

Our story follows Jeanne, a brilliant architect who has a new assignment: renovate the sumptuous Daguerre mansion owned by an eccentric family head of a board game empire. When the landlord and patriarch Cesar is found dead, everyone present becomes a suspect. Suddenly Jeanne's mission turns into a life-size investigation to expose the murderer...

With a ferocious sense of humour, sumptuous visuals, a never-ending ride of twists and turns and a killer sting in its tale, Murder Party is the movie we're all dying for!

LIMITED SCREENINGS FROM OCT.

### THE VILLA

An unlikely story of friendship between Milan, a young man on parole, who is forced to work in a retirement home rather than go to jail, and a larger-than-life group of retired people who are not really prepared to accept this new recruit.





Dizzi Giddings



Pete Conroy



Leanne Lunghusen



Kylie Haley



Angie Russi



## EMAI ART PRIZE 2022 – the inside story

The EMAI Art Prize was a celebration and recognition of the influence that the Echuca Moama Arts Initiative (EMAI) has had on art culture in Echuca over the past 10 years. The appreciation of the Echuca Community for the value of a growing art scene was affirmed by their financial support, attendance and purchase of artworks.

In the beginning the committee of eight were fearless, diving into planning an event for six months hence - with no experience, no finance and little knowledge of working together - however the mixture of ideas, energy and respect was right and the Art Prize became a reality.

The Echuca Community responded to our sponsorship drive. Despite hard years on all, with the impact of Covid, money was raised to cover the prizes. We were buoyed by this encouragement and grateful to the many businesses in the town who gave their support. Grant seeking was taken on by Faye, applying successfully to the Campaspe Shire and Australia Post. More finance was forthcoming - Kerry, our treasurer, relaxed - we now had money to cover the cost of the opening night and printing catalogues.

The EMAI Management Committee provided support through administration, programming links to their website, putting on a display of posters from past exhibits and organizing wine for the opening. A gap was found on the busy Foundry calendar so the Art prize was locked into a definite date, 22nd July to 14th August.

Designs for logos, fliers and catalogues were skillfully created by Penny Silver – a treasure. Liz, our media person, spread the word about the Art Prize to artists far and wide. A time of consternation – would we get 10? 20? 30? By close of entries we had 74! Another wave of buoyancy for us – artist were wanting a competition to take

on a challenge for their creative skills – and challenge it was, as the theme was just one word, TEN. The theme reflected the tenth year of EMAI's formation which could not be celebrated last year due to Covid. Artists interpreted literally or metaphorically - from 10 gum trees or 10 kookaburras to 10 years in prison or 10 hours taken to paint the artwork. The exhibition of art works provided a feast of fun for the viewers as they made their way around finding the themes on 10. The Foundry recorded its second highest number of visitors to this exhibition – an attraction for locals and visitors.

Judges, Simone Bloomfield from Bendigo Art Gallery and Brooke Doughty from South West Arts were invited. They chose Angie Russi's art work "10 up" for first prize, Dizzi Giddings' artwork "10 pedestrians" for highly commended and Cara Haley's artwork "Threads of the past and future" as the youth prize. The Peoples' choice award, "Glam Jail" by Pete Conroy was announced a week later.

Aaaagh – another Covid surge was exploding two weeks before the opening. The Committee went into action to solve the issues of providing a safe environment. Sue guided us with using ticketing on-line to limit numbers, Don engaged with Council to get picket fencing so that the area could be enlarged into the garden behind the Foundry, Robyn kept a running spreadsheet on all the tasks and Judi organized the 100 cupcakes to add to the celebration. The Art Prize achieved more than expected when measured by numbers attending, art works sold and the enthusiasm of artists. The committee plans for the next art prize event in 2024.

DO YOU WANT TO JOIN THIS ENERGETIC COMMITTEE AND VENTURE INTO THE UNKNOWN ?  
IF SO, CONTACT THE FOUNDRY.

The Committee in 2022:

Don McKenzie, Kerry Williams, Faye King, Liz Dellar, Robyn Maclean, Judi Palmer, Sue Harrison, Carolyn Rolls



Founding member of EMAI  
Anne Mawson spoke at our recent ten year celebration.

Firstly, I want to congratulate Tim and the committee who have made this exhibition happen. The last 2 years have not been kind to the arts and any public event like this takes hours of organising and hard work. It's a credit to the people involved in the Foundry who have just kept going through so much uncertainty. Well done and thank you.

Tonight we celebrate 11 years since EMAI first became an incorporated organisation. But the journey really started a year or so earlier than that with a public meeting. Over 100 people answered the call from the Campaspe and Murray Shires to come and discuss what we would like to see happen with the arts in our region. The passion and enthusiasm was evident from that moment, with people representing theatre, music, dance, visual art, film and literature. A lot was discussed on the night, but what everyone agreed on was that the region needed a central, community arts hub where like-minded people could come together and celebrate the arts. Many meetings later EMAI was formed and its first official event was a mini arts festival that took place in and around the Uniting Church. There was an art exhibition, poetry workshops, paint wars and even a belly dancer who performed on the steps of the church, which had to be a first. But we needed our own space. So we set out to investigate every possible potential space in Echuca and settled on the old Library in High St. We were pretty determined to have that space and commissioned a Feasibility Study to flesh out how it could be done. In the meantime we held pop-up exhibitions in empty shops around Echuca. Some of you may remember Tarli Bird's amazing installation in the arcade.

Eventually our ruthless determination paid off and we were offered the Customs House to run as an arts space to get some Facility Management experience. Two years and 20 exhibitions

later, the newly refurbished Foundry building was available for us to move into. And with the last-minute addition of heating and cooling, we were convinced to forget about the old library as our dream gallery.

There are so many people who have contributed to EMAI and helped establish the Foundry as we know it today. We are very blessed to have great people in our community who have come together to build The Foundry Arts Space and continue on with the vision of EMAI.

Some of my special highlights...

I am very proud of the wonderful relationship we have with our indigenous community. The annual NAIDOC exhibition here at the Foundry is a very important event in the calendar. I enjoy watching the progress of local artists who start nervously exhibiting art in one of the members' exhibitions and then years later hold a solo show. I love the contribution young people have made either with performing music or showing their artwork at one of the youth exhibitions. When Maddie Colville wins her first Golden Guitar award we can boast that she first performed here at The Foundry. Live music event Benny Walker was very special and demonstrated how versatile the space is and set the scene for more performances to come. Finally, the Deborah Halpern exhibition. When I walk past her sculpture, Angel, on Birrarung Marr in Melbourne, I get goose bumps. I will never forget the night Deborah arrived, late, with her station wagon and trailer packed with fragile, artwork. She fell asleep of the little green couch we used to have here while we unpacked her work. It was an action-packed month of workshops, talks and a very successful exhibition. It ended with us having to hand deliver one of her very heavy and expensive mosaic sculptures to a buyer in Melbourne. We had it strapped to the back seat with all three seatbelts on it.

So here we are more than twelve years after the public meeting that started everything off. What we now have is a place where like-minded people do come together, feel connected and enjoy the arts.

Anne Mawson

"THROUGH OUR LENS" - ECHUCA PHOTOGRAPHY CLUB

16/09/22 - 9/10/22

**ECHUCA MOAMA  
PHOTOGRAPHY CLUB**

**THROUGH OUR LENS**

OPENING 16TH SEPTEMBER 6PM UNTIL 9TH OCTOBER 2022



**THE FOUNDRY ARTS SPACE**  
13 - 17 MURRAY ESPLANADE, PORT OF ECHUCA  
weekdays 11am - 3pm (closed tuesdays)  
weekends 10am - 4pm

THE FOUNDRY  
**ARTS  
SPACE**



Sixteen Echuca Moama Photography Club members will display their favourite print images. Each photographer has their own unique way to make images using interesting formats and styles. Expect to see spectacular, large images of the milky way, landscapes, portraits, flowers, domestic and wild animals, the most daring abstracts and even travel snaps. All images are for sale, some framed ready to hang and others ready for framing by the purchaser. If you see an image that you would like reprinted, or in a different size feel free to ask.

The exhibitors are: Sharla Anderson, Noelene Charlton, Brent Colbert, Lou Conway, Liz Dellar, Eugene Dopheide, Isabella Ererle, Martin Flanagan, Roz Harris, Lyn Keillor, Anne Leviston, Joe Mangan, Lynne Pearce, Pam Pengelly, Kevin Robley and Annabelle Walker.

The club meets fortnightly in the Echuca library on Wednesdays at 7pm. The club runs a monthly photo competition and organises photography excursions.

Any prospective members wanting to join the club are invited to come along to the library at 7pm on the 1st and 3rd Wednesdays of the month. For further information you can contact either President - Joe Mangan on Mob: 0438 846 264 or email: joe.p.mangan@gmail.com or Vice President Anne Leviston on Mob: 0409 877 687 or email anne@anneleviston.com

<https://www.facebook.com/Echuca.Moama.Photography.Club/>  
echucamoamapc@outlook.com



Vicki Walker

Introducing our newest committee member and volunteer, Vicki Walker.

I'm a Yorta Yorta Woman, I was born here on my Country, have lived and worked here all my life. I'm often invited to perform a Welcome to Country, I feel privileged to share the stories and welcome people on behalf of our Ancestors and the Elders of the Yorta Yorta Nation. I like to tell stories though my welcome that have been told to me, I love to talk about our connection to country and what it means to us.

I've only just began to volunteer at EMAI, although I've been involved in all the NAIDOC Exhibitions even prior to EMAI moving to the Foundry Art Space some years ago. NAIDOC week is my favourite time of year, working with the EMAI team and community to assist in pulling the July show together. We've built some great relationships and friendships through our NAIDOC week exhibitions over the years Art, Music and food always bringing people together. I wish we could do more of it, not just on our Special Celebration weeks.

I have an absolute love for all the Arts, I'm particularly fond of hand built ceramic pieces. I have to credit my love for ceramics to my long-time friend Paul Aburrow. Paul has been a massive support to our Aboriginal Students and Community at Bendigo TAFE Echuca Campus Aboriginal Education Unit for over 25 years. Most of the Artwork over our NAIDOC Exhibition each year come from the student work. Yorta Yorta Elder, Denise Morgan Buller, and Paul have worked alongside me through all these years, it was Denise who introduced us to the EMAI team, and we've all been there since the beginning.

Vick x

The Foundry Arts Space wouldn't exist without our volunteers and to show our appreciation we're planning a get-together with morning tea scheduled for a date in October. Keep a look out on the socials and your inbox for further details.



IF YOU'D LIKE TO TRY YOUR HAND AT VOLUNTEERING AT THE FOUNDRY ARTS SPACE PLEASE GET IN TOUCH, WE'RE ALWAYS ON THE LOOKOUT FOR MORE HELPERS.

ALL TRAINING IS CARRIED OUT BEFORE WE LET YOU LOOSE,

SO NOTHING TO FEAR! CONTACT ANDREA AT THE FOUNDRY FOR MORE DETAILS ON 0475448452



## start creating NOW!!

Our annual EMAI Members' Summer Exhibition is just around the corner...

If you are creating unique, handmade, high quality art and craft, we'd love you to be a part of our exhibition during the summer holidays.

Exhibition opens 9th December 2022 and runs until end of January.

More details to follow.

**painting, sculpture, craft & more  
AT THE FOUNDRY ARTS SPACE**

THE FOUNDRY  
**ARTS  
SPACE**



# The Foundry Arts Space – 2022 exhibition calendar

feb 4-2 \_\_\_\_\_ "Land of the Parrots" Marion Lynk  
 march 4-27 \_\_\_\_\_ "Energy of Ghosts" Luann Bennett & Eric Lalone  
 april 1-26 \_\_\_\_\_ "Reading Between the Lines" Judith Roberts & Kerry Handwerk  
 april 27 – may 22 \_\_\_\_\_ "Field Notes" Jane Annois & Ellen Lee  
 may 27 – june 19 \_\_\_\_\_ "Denatured" Wendy McDonald & Pam Uren  
 june 24 – july 17 \_\_\_\_\_ NAIDOC Exhibition & Celebrations  
 july 22 – august 14 \_\_\_\_\_ "REFLECTIONS ON TEN" EMAI Art Prize Exhibition  
 august 19 – september 11 \_\_\_\_\_ "Painted On Smile" Tuesday Junction  
 september 16 – october 9 \_\_\_\_\_ "Through Our Lens" Echuca Photography Club  
 october 14 – november 6 \_\_\_\_\_ to be announced soon!!  
 november 11 – december 4 \_\_\_\_\_ Youth Exhibition  
 december 9 2022 – end of January 2023 \_\_\_\_\_ 2023 Members' Summer Exhibition

\*\* dates to be confirmed closer to the event, check social media or call 0475 448 452 for updates.

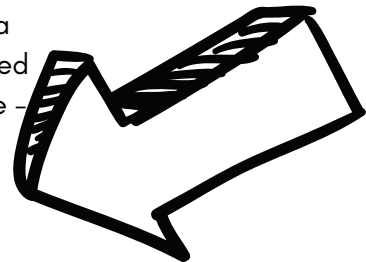
THE FOUNDRY

**ARTS  
SPACE**



## EXPRESSIONS OF INTEREST 2023

Artists of all disciplines who are interested in exhibiting, holding a workshop, performance or class in this unique Arts space are invited to tell us more about themselves and their work by via the website – [emai.org.au/expression-of-interest](http://emai.org.au/expression-of-interest)



Applications now open to everyone and close sept. 30th 2022.

PAINTING/DRAWING/PHOTOGRAPHY/PRINTMAKING/SCULPTURE  
 CERAMICS/MUSIC/GRAPHICS/TEXTILES/POETRY/JEWELLERY  
 GLASS/ART/LITERATURE/COLLAGES/PERFORMANCE

## RAV - (Regional Arts Victoria) visits The Foundry Arts Space!

When Regional Arts Victoria 'Connecting Places' Coordinator Nikki Rolston paid us a visit recently she was very impressed with the way The Foundry Arts Space operates, particularly with the number of exhibitions that we present each year. As a volunteer-managed arts organisation we are eligible to book and host live performances through

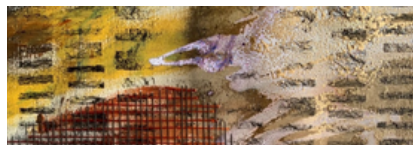
Regional Arts Victoria.  
 We're a little bit excited!  
 Contact Tim for details.



Tim Smallwood, Jenny Turner, Nikki Ralston and Faye King networked in regard to Regional Arts Victoria's Connecting Places, performing arts touring program.

## KYABRAM TOWN HALL GALLERY

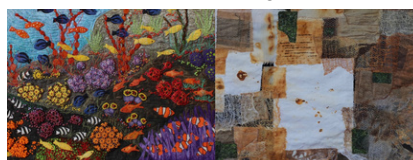
CENTRALLY LOCATED AT 199 ALLAN ST.  
 AUGUST /SEPTEMBER 2022 OPEN 10-4 PM MONDAY - SATURDAY  
 FOUR GALLERY SPACES  
 03 58521546 0490371641  
[www.kyabramtownhall.com.au](http://www.kyabramtownhall.com.au) [info@kyabramtownhall.com.au](mailto:info@kyabramtownhall.com.au)  
 PARKING AT REAR OF HALL OFF BRADLEY ST



TALI BIRD  
 aug. 1st - oct. 1st



DEB LAYT- TEXTILE ART  
 1st aug. - 1st oct.



SAQA - OCEANIA  
 DISTANCE AND DIVERSITY  
 TEXTILE ART



THIRD DIMENSION  
 SPLINTER CONTEMPORARY ARTISTS  
 6th aug. - 6th nov.

### October /November

Victorian Quilters Bi-Annual Exhibition Opens 3rd Oct. ends 3rd Dec.  
 Judy Hutchins ESSENCE OF AUSTRALIA Opens 3rd Oct. ends 3rd Dec.  
 Splinter Contemporary Artists new work. Ends Jan. 2023  
 Reform Movement 1902: A series of Punch Cartoons satirizing the fall of the Victorian Peacock government as a result of the Kyabram Reform movement.

December  
 SANTA'S CAVE is back!!

# Upcoming youth events at the Foundry Arts space!!!

## FUN CERAMICS WORKSHOP

Join artist Kenny Pittock for a ceramics workshop at The Foundry Arts Space where you will create and paint a ceramic artwork relating to the theme 'The Picnic in the Gallery.'

THE FOUNDRY  
ARTS  
SPACE



VICTORIA  
State Government



As a part of Victorian Youth Fest, The Foundry is hosting a ceramics workshop by artist Kenny Pittock. Victorian Youth Fest is a month-long celebration that aims to reconnect young people through a series of events supported by the Victorian Government. If you are aged between 12-25 years old and interested in attending get in touch as places are limited!

These artworks will feature as a collaborative installation in the annual Foundry Youth Exhibition in November.

This workshop is part of the Victorian Youth Fest 2022.  
Participants need to be between the age of 12-25 to attend.

Date: Tuesday September 20th Time: 10am to 4pm

Location: The Foundry Arts Space, 13-17 Murray Esplanade, Echuca.

Cost: Free, Lunch will be provided. Please let us know when booking any dietary requirements.

To book please email: [thefoundry@emai.org.au](mailto:thefoundry@emai.org.au).

### THE FOUNDRY YOUTH EXHIBITION 2022

THE FOUNDRY ARTS SPACE INVITES YOUTH  
AGED BETWEEN 12 AND 25 YEARS TO CREATE  
AND SUBMIT ART IN RESPONSE TO THE THEME

POP  
CULTURE

EXHIBITION DATES:  
NOV. 11TH - DEC. 4TH 2022  
CONTACT ANDREA 0475 448 452  
FOR FURTHER DETAILS