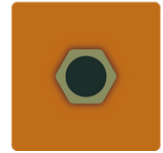


arts news

raising the profile of the arts in the Echuca Moama region



chair report

Well, it's not got any warmer, but then Winter is now finally with us, and we are fortunate that we are only cold and not flooded. Our sympathies go out to those flooded; "yet again". Some of our members having their regular holidays in the North to get away from the Echuca cold, maybe also be having second thoughts about next year. On the subject of the cold, like many others after Covid last month, I too succumbed to a cold this last month, a reminder to get that flu jab which kept my cold from becoming something more serious.

Early in June we were able to host the first of our Simplot Morning Teas for residents from Wharparilla Lodge, Echuca Community for the Aged. We held it on a Tuesday so that they had the Foundry to themselves to minimize any possible risks. It was most successful with tea served on teacups and saucers which all the visitors really appreciated, usually having mugs. There were no cakes left at the end of the visit! We will be hosting more once the current resurgence of Covid has subsided.

We were fortunate to present a combined exhibition by Wendy McDonald and Pam U'ren French titled "Denatured" during June. Both artists complimented each other's work with an exploration of a different way of experiencing our environment, sometimes challenging but always emotional and even tactile which held the attention of all who visited.

The exhibition was followed by an exciting exhibition of work by our young Yorta Yorta artists that is a contemporary vision of the indigenous art of country. All visitors have been absorbed by the incredible variety and strength of the work on display.

Now: the EMAI Arts Prize "Ten" exhibition of entries to the prize celebrating ten years: well plus one actually because of the Covid delay since the founding of Echuca Moama Arts Initiative in 2011. The Foundry Arts Space is a very busy space and the 76 entries an exciting and varied (and sometimes mystifying) interpretation of the subject "10".

We posted an advert in the Riv during the month hoping to assist us with the co-ordination of Foundry Activities and Events unfortunately without success. We continue to receive requests to use Foundry facilities for events other than exhibitions which we are keen to encourage. However, we need someone to help the team in responding to enquiries and to keep track of and manage events, workshops, classes and so on so they don't clash; in other words, "Manage the Diary".

Kevin Simpson has completed the two extra moveable wall panels that screen off the kitchen and back of house area and a working "B" has painted and mounted the hanging system on the walls. This now enables the Foundry to effectively be divided into two exhibition spaces and provides for a separate flexible space where community classes, workshops and so on can be run at the same time as the main exhibition program as well as the possibility of a second gallery space. Flexibility is the key, but how this flexibility will be managed will be the next issue to be resolved in the coming weeks.

My gallery visit this month was again to SAM and the current "Art in Conflict" touring exhibition from The Australian War Memorial. It is far from being the normal images of war and includes terrific contributions and surprising representations by Aboriginal and Torres Straits artists to the genre. It's worth keeping in touch with the SAM website to make sure you don't miss any more exhibitions.

We will be sending out invitations to a morning tea during August to thank our Foundry volunteer team and to introduce more members to the pleasure of meeting visitors to Echuca and Moama from around the country as well as meeting artists and others through volunteering at the Foundry.

Tim Smallwood



**GET UP!
STAND UP!
SHOW UP!**
3-10 JULY 2022

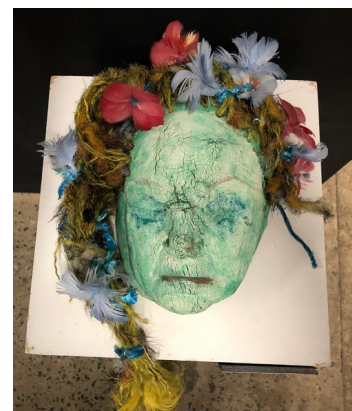
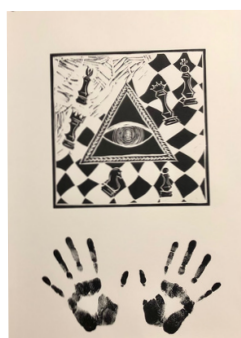
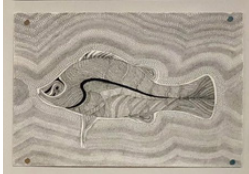
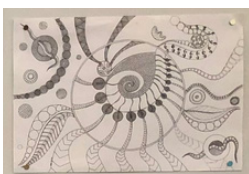
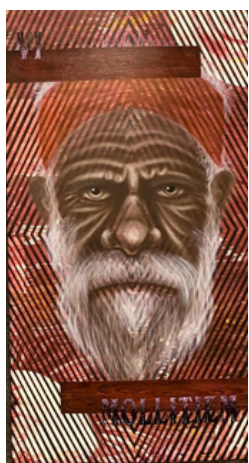
The opening night of the 2022 NAIDOC exhibition showcased some exceptional talent from Bendigo TAFE students and local artists. A moving welcome to country was given by Uncle Des Morgan, while Vicki Walker explained the background to this year's NAIDOC celebrations, "Get Up, Show Up, Stand Up". Delightful singing by Maddi Colville Walker, delicious nibbles and lively conversation made the night a big success. The variety of styles, themes and subject matter created a really interesting exhibition, and all exhibiting artists are to be congratulated on their work.

NAIDOC 2022 THEME AND WHAT IT STANDS FOR...

We have a proud history of getting up, standing up, and showing up. From the frontier wars and our earliest resistance fighters to our Aboriginal and Torres Strait Islander communities fighting for change today—we continue to show up. Now is our time. We cannot afford to lose momentum for change. We all must continue to Get Up! Stand Up! Show Up! for systemic change and keep rallying around our mob, our Elders, our communities. Whether it's seeking proper environmental, cultural and heritage protections, Constitutional change, a comprehensive process of truth-telling, working towards treaties, or calling out racism—we must do it together. It must be a genuine commitment by all of us to Get Up! Stand Up! Show Up! and support and secure institutional, structural, collaborative, and cooperative reforms. It's also time to celebrate the many who have driven and led change in our communities over generations—they have been the heroes and champions of change, of equal rights and even basic human rights. Getting Up, Standing Up, and Showing Up can take many forms. We need to move beyond just acknowledgement, good intentions, empty words and promises, and hollow commitments. Enough is enough. The relationship between Aboriginal and Torres Strait Islander peoples and non-Indigenous Australians needs to be based on justice, equity, and the proper recognition of Aboriginal and Torres Strait Islander peoples' rights. Get Up! Stand Up! Show Up! with us to amplify our voices and narrow the gap between aspiration and reality, good intent and outcome. Get Up! Stand Up! Show Up!

<https://www.naidoc.org.au>

Just a sample of a few of the incredible artworks on display in this year's NAIDOC exhibition by Bendigo TAFE artists Stuart Hearn, Rochelle Patten, Jan Muir, Bianca Farrer & others. Opening night: (L-R) Judi Lawler, Des Morgan, Vicki Walker & Paul Jarman.



THE FOUNDRY
**ARTS
SPACE**

This is not your regular exhibition! It's an art prize!

ART PRIZE 2022

REFLECTIONS ON TEN

23RD JULY - 14TH AUGUST



The winning artists in three categories will be announced on opening night Friday 22nd July.

Judges are Simone Bloomfield (Bendigo Art Gallery), and Brooke Doughty (South West Arts Inc.).

The winner of the fourth category, Peoples' Choice, will be announced after voting closes at the end of July.

The hanging team will also reveal a "Hangers' Prize" in the days leading up to the official announcements.

Please check your emails! If you have the 'sticky-tickets' link you need to act on it quickly. Our art prize gala opening event is Friday 22nd July 2022 and excitedly, responses from invited guests - artists, sponsors, members and VIP guests - are filling our available space!

Even if you are not at the opening event, you won't miss the art prize exhibition. It runs 11am-3pm daily from 23rd July until 14th August (closed Tuesdays). Free entry.

And, a whopping big thank you to all our major sponsors who have helped make the dream of an art prize a reality



2022 exhibition calendar

feb 4-2	"Land of the Parrots" Marion Lynk
march 4-27	"Energy of Ghosts" Luann Bennett & Eric Lalone
april 1-26	"Reading Between the Lines" Judith Roberts & Kerry Handwerk
april 27 - may 22	"Field Notes" Jane Annois & Ellen Lee
may 27 - june 19	"Denatured" Wendy McDonald & Pam Uren
june 24 - july 17	NAIDOC Exhibition & Celebrations
july 22 - august 14	"REFLECTIONS ON TEN" EMAI Art Prize Exhibition
august 19 - september 11	"Painted On Smile" Tuesday Junction
september 16 - october 9	"Through Our Lens" Echuca Photography Club
october 14 - november 6	"What could be more than a bird in a tree?" Marion Gould retrospective (1927 - 2016) & Olivia Lawton
november 11 - december 4	Youth Exhibition
december 9 2022 - end of January 2023	2023 Members' Summer Exhibition

** dates to be confirmed closer to the event, check social media or call 0475 448 452 for updates.

PAINTED ON SMILE.

finding joy, making art

OPENING 19TH AUGUST 6PM



Kerry Williams,
detail from larger installation work



Tuesday Junction Art Group are coming together again this August for an exhibition at the Foundry Arts Space. Painted On Smile celebrates the joy of making art and how important creativity is in times of chaos and change. The exhibition will include works on paper, painting, ceramics, textiles and sculpture. A feature of the show will be a collaboration with contributions from each artist as a centre piece. The opening night is Friday August 19 at 6 pm. The exhibition will run until September 11.

start creating NOW!!

Our annual EMAI Members' Summer Exhibition is just around the corner...

If you are creating unique, handmade, high quality art and craft, we'd love you to be a part of our exhibition during the summer holidays.

Exhibition opens 9th December 2022 and runs until end of January.

More details to follow.

painting, sculpture, craft & more
AT THE FOUNDRY ARTS SPACE

THE FOUNDRY

**ARTS
SPACE**





Residents from Wharparilla Lodge, Echuca Community for the Aged. enjoying the art, conversation and morning tea provided as part of Simplot sponsorship of art for the community.

AN OPEN LETTER TO OUR (WINTER) VOLUNTEERS.....

Dear volunteer, we love you!!

You enable the Foundry Arts Space to keep its doors open on the coldest, windiest and rainiest of days. You provide conversation, local knowledge and an ear to the stories our visitors tell of their travels and experiences. You provide another interesting venue for locals and tourists alike who appreciate the arts and for those who didn't realise they did ...until now.

We appreciate the effort needed to get out on a wintry day and so we've taken the step to shorten our weekday hours over the winter months. This means 2 less opening hours per day during the week (11am - 3pm).

There are still plenty of visitors to our region looking for what we offer but a couple have been disappointed of late to find that the gallery has closed earlier than advertised. So, if you must leave early please let us know or arrange for someone to share the load.

Also, stay tuned for our volunteer morning (or will it be afternoon?), tea which will be held soon.

Rest assured you will be the first to know the details.

Lots of love,

The Foundry Arts Space (exhibitions team) xx

VOLUNTEER SPOTLIGHT



Eugene Dopheide drives from his home outside Heathcote to fill a regular spot on the volunteer roster. Eugene is also a member of EMAI and a photographer.

Look out for his works in the Echuca Moama Photography Club's exhibition later in the year!



IF YOU'D LIKE TO TRY YOUR HAND AT VOLUNTEERING AT THE FOUNDRY ARTS SPACE PLEASE GET IN TOUCH, WE'RE ALWAYS ON THE LOOKOUT FOR MORE HELPERS.

ALL TRAINING IS CARRIED OUT BEFORE WE LET YOU LOOSE, SO NOTHING TO FEAR! CONTACT ANDREA AT THE FOUNDRY FOR MORE DETAILS ON 0475448452



MOVIE LOVERS



BENEDICTION LIMITED SCREENINGS FROM JULY 21

A complex man who survived the horrors of fighting in the First World War, Siegfried Sassoon (Jack Lowden / Peter Capaldi), a soldier decorated for his bravery on the battlefield, became a vocal critic of the government's continuation of the war when he returned from service. Legendary still today for his poetry inspired by his experiences on the Western Front, he was adored by both members of the aristocracy as well as stars of London's literary and theatre scene. He embarked on affairs with several high-profile men as he attempted to come to terms with his homosexuality, whilst at the same time, broken by the horrors of war, his life's journey became a quest for salvation.

OFFICIAL COMPETITION FROM MID AUGUST

When a billionaire entrepreneur impulsively decides to create an iconic movie, he demands the best. Renowned filmmaker Lola Cuevas (Penélope Cruz) is recruited to mastermind this ambitious endeavour. Completing the all-star team are two actors with massive talent but even bigger egos: Hollywood heartthrob Félix Rivero (Antonio Banderas) and radical theatre actor Iván Torres (Oscar Martínez). Both are legends, but not exactly best friends. Through a series of increasingly eccentric trials set by Lola, Félix and Iván must confront not only each other, but also their own legacies. Who will be left when the cameras finally start rolling?

NATIONAL PORTRAIT GALLERY

One of our most recent EMAI/Foundry members Daniel Wein, was selected as one of the 39 finalists in the Darling Portrait prize.

I feel very honoured to have the portrait I painted of my grandfather listed as a finalist in the Darling Portrait Prize. It still feels surreal to know it is currently hanging on the wall at the prestigious National Portrait Gallery! I had the great privilege of meeting many talented artists, board members of the National Portrait Gallery and of course, Marilyn Darling. Everyone I met was incredibly welcoming, passionate and kind.

The painting I submitted is of my 92-year-old grandfather sitting at his desk in the study, drinking a cup of lemon tea and watching a zoom meeting on his smartphone during the Melbourne lockdown. Anyone who knows my grandfather, takes one look at this painting, and immediately recognises him in it. They recognise a technologically savvy man, likely drinking his 7th cup of lemon tea for the day going about his day-to-day tasks and point out the photograph on his desk of his late wife and her sisters.

I see a determined man who to this day, has rarely taken a day off work; I see a person who values family and friendship above all else; a father, grandfather and great-grandfather who calls his loved one's multiple times a week to check in; I see my Papa, who whenever I'm in Melbourne always packs a bag of my favourite foods and calls me to remind me to pick it up before my drive back to Echuca.

While I am very grateful to have my painting hanging in the Darling Portrait Prize Exhibition; I am even more thankful that I was able to share this experience with such an important person in my life – my Papa, 'Hymie', my epitome of life.



KYABRAM TOWN HALL GALLERY

CENTRALLY LOCATED AT 199 ALLAN ST

AUGUST /SEPTEMBER 2022 OPEN 10-4 PM MONDAY - SATURDAY

FOUR GALLERY SPACES

03 58521546 0490371641 www.kyabramtownhall.com.au info@kyabramtownhall.com.au

PARKING AT REAR OF HALL OFF BRADLEY ST

• TALI BIRD- CONTEMPORARY ART



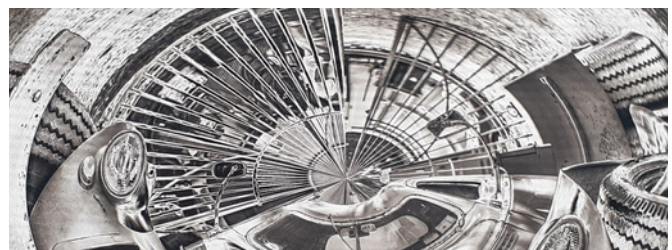
• DEB LAYT- TEXTILE ART



• SAQA - OCEANIA: DISTANCE AND DIVERSITY - TEXTILE ART



• THIRD DIMENSION SPLINTER CONTEMPORARY ARTISTS





**Echuca Moama Arts Initiative
and The Foundry Arts Space**
Event Co-ordinator

Contact **Tim Smallwood** on **0404 860 608**
or by email to
theFoundry@emai.org.au
to find out more.

Echuca Moama Arts Initiative Inc are looking for a person to co-ordinate and program and even promote regular special events, workshops, and pop-ups at The Foundry Arts Space Gallery in the Echuca Port precinct, alongside regular exhibitions.

This is a volunteer part-time role which would suit someone recently retired from working in events management or even if you are an organised person interested in working alongside The Foundry Exhibition Team to assist in managing the increasing activation of our arts space.



**The People's Poet:
HENRY LAWSON in Verse and Song**

PROCEEDS TO AID ECHUCA HISTORICAL SOCIETY

SUNDAY, 21ST AUGUST - 2PM

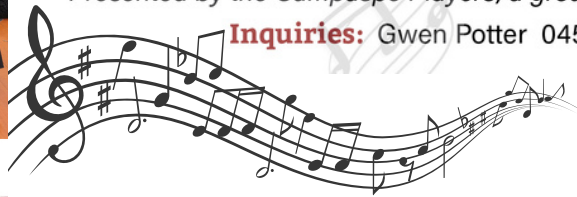
Join us as we tell Lawson's own dramatic, often tragic life story, highlighted by his legendary, much-loved poems... about the bush and the city, mateship, endurance, kindness and resistance to oppression. Born on the goldfields, Lawson was a radical, a poverty-stricken alcoholic, unlucky in love, a jail inmate... yet his works were feted around the world. This year marks a century since he died... yet still Lawson is revered as a giant among writers, who held up a mirror showing us our Australian identity.

Echuca Uniting Church Hall, cnr. Pakenham and Hare Sts.

Tickets at the door: \$20 adults, \$5 under 18

Presented by the Campaspe Players, a group of district performers.

Inquiries: Gwen Potter 0456 223 184



CUSTOMS HOUSE GALLERY

Ali Farrell started the Customs House Gallery a couple of years ago and passed it onto Alan Davidson and Kate Villarroel initially for the month of May.

Alan and Kate are excited to announce the lease has been extended for 12 months and the gallery's 1st Exhibition, 'Winter Blues and Other Colours', will open on Saturday, 30th July at 6pm. The artists, Steff Tisi (from Melbourne) and Abby Fortin (from Shepparton) both specialise in abstract acrylic works with a range of wonderful colours.

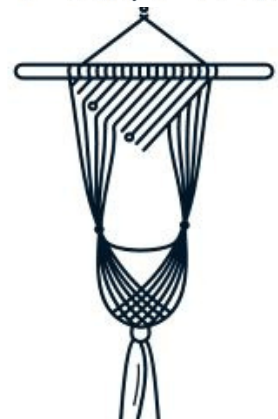
With over 40 local artists displaying artworks for sale in the gallery and with over 400 pieces, including paintings; ceramics; sculptures; jewellery; origami; furniture; plants; cards; and more, there is something for everyone!

Always worth a visit to see the ever changing display of work by local and regional artists and artisans

2 Leslie Street, Old Port of Echuca (between the ice-creamery and the horse carriage rides). 10am - 4pm, closed on Tuesdays).

Macrame Workshops

By
Donald Dorman



-Bookings:

Sean 0448545314

Donald 0475711664

9th & 23rd July
Uniting Church Echuca

PS: Cake & tea provided!

please get in touch for other dates and venues!

