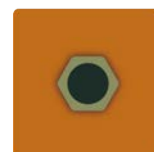


# arts news

raising the profile of the arts in the Echuca Moama region



## chair report

It has been two months since I reported, but those who have been involved and volunteering will know what a busy and successful time it's been for The Foundry. The Inside Job exhibition was exceptionally well received with visitor numbers and sales of work well up.

The current Dreaming exhibition of work by Vera and Diana Cooper and Brian Firebrace has been a fitting tribute to them, with many of the pieces not seen for many years, giving a unique opportunity for the community and visitors to see work from private and public collections. Ruby Cooper's exhibition of works has seen lots of interest with sales to match. It is unfortunate that the exhibition has not had a farewell celebration because the lockdown has come at the very worst time. This lockdown has also had an impact on the incoming print exhibition and workshops by Dianne Longley.

The success of these exhibitions has been due to the work and support of volunteers without whom The Foundry Arts Space could not remain open. In fact, some of you may have been aware that one Monday the doors were closed all day: the result of no volunteers being available. This is the most important issue currently facing the Foundry. We are having to rely on too few volunteers to keep the doors open for the enjoyment of the community and visitors to Echuca Moama. I invite the membership to contact me or other members of the committee of management to discover the pleasure of volunteering at the Foundry.

Future issues being considered is the proposal that because we now do not have any painting or other classes being held, we increase the Foundry gallery exhibition space by moving the wall panels to include the existing class space so that future activities take place within the gallery exhibition space with more community involvement.

Finally, I have to thank those members who attended the meeting at the Foundry and contributed to the discussion to summarise the words that define the future direction of The Foundry Arts Space. Approximately 20 members in table groups were able to socialise and come up with a variety of words to define our expectations; the intention of which will be incorporated into the 2022 Expression of Interest document that will be put out in August: Original, Fresh and Unique.

Get in touch; become involved: it will be enjoyable, interesting and rewarding; and remember in these rapidly changing times due to Covid lockdowns keep an eye open for update messages on social media and emails from EMAI administration, keeping you informed.

Tim Smallwood  
Chair  
0404860608  
timsmallwd@gmail.com

# PAST EXHIBITION - INSIDE JOB



(L-R) Anne Mawson, Carole Ciavarella, Bronwyn Morton, Kerry Williams, Penny Silver, Tim Smallwood (EMAI chair)

EXPLORING CREATIVITY FROM WITHIN, was the subtitle of this exhibition by the creative group of artists comprising Bronwyn Morton, Anne Mawson, Penny Silver and Kerry Williams. The group have been creating art both together and separately for over 20 years. The exhibition was officially opened by Carole Ciavarella who gave insight to the artists themselves as well as their work. The event was very well received as evidenced by the large number of attendees and works sold.

## CALENDAR OF EVENTS 2021

### THE FOUNDRY

# ARTS SPACE



**DIANNE LONGLEY** FINE ART PRINTMAKER, EXHIBITION, WORKSHOPS, ARTIST TALKS, 2ND-30TH JUL.- 22ND AUG.

**"RICH RIVER QUILTERS"** 27th Aug.-12th Sept.

**"POLAR OPPOSITES"** - LEANNE CUFFE, KRISTEN DYER, MICHELLE GODDEN, JUDI PALMER, JOAN STEVENS & KATHLEEN WATSON 17th Sept.-10th Oct.

**"THE ROADS AND THE RIVER"** DENISE K DALTON, MEG DOLLER, KATHRYN LEHAR, ROBYN MACLEAN, NERIDA MURRAY, JUDI PALMER 15th Oct.-7th Nov.

**"THE ART OF SURVIVAL"** LILY O'CONNELL & **"SOPHLETTA"** SOPHIE WILSON 12th-28th Nov.

**"MEMBERS' GALLERY SHOP"** 3rd Dec.-30th Jan. 2022



## MOVIE LOVERS

Tickets available soon



We will be closed until further notice in accordance with the State Laws.

[www.echucaparamount.com](http://www.echucaparamount.com)

## 69th Melbourne International Film Festival

# August 2021



Following a most entertaining and emotional opening on 25th June, this exhibition continued to attract a lot of interest. Many works by Vera Cooper, Dianne Cooper and Brian Firebrace have been gathered for this exhibition from private collections. Ruby Cooper and Vicki Walker have had items on display for purchase including ceramics, paintings, wearable art and smaller items. Central to the display were a possum skin coat and an impressive model of the river serpent Dhungala.

The Victorian lockdown caused disappointment as the last week and the closing ceremony had to be cancelled.

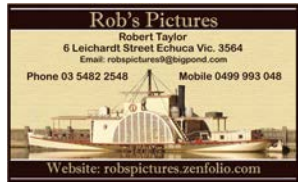


Photo credits: Robert Taylor



(LEFT) Luckily we managed to hold one of weaving workshops before we were locked down - again. (ABOVE) some of the heartfelt stories and entertainment being shared on opening night.

## expression of interest 2022

ARTISTS OF ALL DISCIPLINES WHO ARE INTERESTED IN EXHIBITING, HOLDING A WORKSHOP, PERFORMANCE OR CLASS IN THIS UNIQUE ARTS SPACE ARE INVITED TO TELL US MORE ABOUT THEMSELVES AND THEIR WORK BY

THE FOUNDRY  
**ARTS  
SPACE**



REQUESTING EOI FORM FROM [THEFOUNDRY@EMAIL.ORG.AU](mailto:THEFOUNDRY@EMAIL.ORG.AU)  
EOI FORMS ALSO AVAILABLE AT THE FOUNDRY.  
APPLICATIONS OPEN SEPT.1ST AND CLOSE SEPT.30TH 2021.  
ALL APPLICANTS NOTIFIED BY  
OCT. 22ND 2021.

THE FOUNDRY  
**ARTS  
SPACE**



## MEMBERS' GENERAL MEETING



Unique, fresh, original -

these were just a few of the words suggested at the "Members have their Say" meeting last month (June 17th) at the Foundry. A group of around 20 members got together and contributed to the discussion to summarise the words that define the future direction of The Foundry Arts Space.

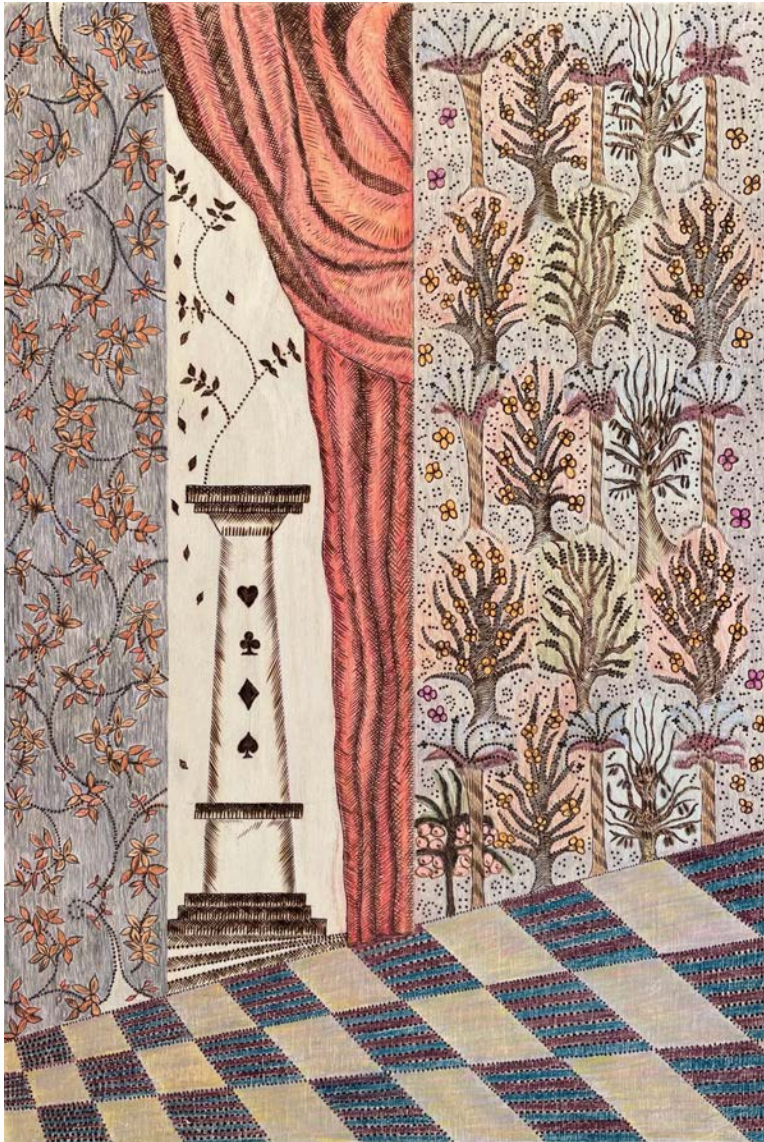


Photo credit: Tarli Bird

2021 FEATURE EXHIBITION, AND WORKSHOPS & TALKS

# DIANNE LONGLEY

## FINE ART PRINTMAKER



Theatre Garden: Autumn ,  
45 x 30 cm , pokerwork, Derwent pencils on wooden panel

## Theatre Garden

EXHIBITION OPENING  
friday 30th july, 6pm

Working across a range of media including printmaking; encaustic and pokerwork on wooden panels; artist books; on-glaze porcelain; and small scale bronze casting, Dianne's fantastic worlds and mystical dreamscapes enact the absurdity of human existence. The works often combine primordial plant forms such as yuccas, agaves and cacti, with fanciful figures and imagined landscapes. This cast of creatures and plants are combined to create various peculiar and curious scenarios. Her characters live in a world where nothing is certain.



### HEAR ABOUT THE PUBLISHING PROCESS THROUGH THE AGES

The development of printing for book illustrations (as opposed to hand drawn and painted illustrations), has yielded artists with a significant range of technical processes with which to explore their creativity. The history of the printed book intersects continually with the history of the print. It is this parallel that is the focus for my lecture: The nexus between book printing, fine art printing, and artists' abilities to adopt and utilise new technologies when making creative works.

TUESDAY 10TH AUGUST 2PM @ The Foundry

As this newsletter goes to print, plans for fine art printmaker Dianne Longley's exhibition "Theatre Garden" are in hand, ready for the official opening 6pm Friday July 30th. And don't forget to put your name down for the talks and workshops on offer!

### STROLL, LISTEN, CHAT, DRINK AND NIBBLE.

How lucky are we to be members? Dianne will provide members with a personally guided tour of her exhibited prints, answering questions and giving commentary as we leisurely wander through The Foundry with our drinks and nibbles. (Non members may join up as members before the event.)

SATURDAY 31ST JULY 5PM @ The Foundry

book your place now  
email: [thefoundry@emai.org.au](mailto:thefoundry@emai.org.au)  
participants capped at 6 per workshop  
to ensure personalised tuition.

No previous experience necessary.

Workshops can be taken as a series or individually.

Morning tea and lunch provided.

All materials supplied.  
cost: \$250 per person per workshop  
(EMAI members \$220)

## WORKSHOPS

### **1. Printing Embossed Plants with Photopolymer Plates Date to be confirmed. Possibly Thurs.12th and/or Friday 13th August.**

Embossed printing plates can be made using plants, textures, fabrics placed directly on the plate surface and exposed to UV light (sunlight or UV unit). The plates are developed in tap water and can be printed in a press to create beautiful cards.

### **2. Cyanotypes - Printing Plants and Textures Monday August 2**

Make cyanotypes using plants and textures. This very evocative early photographic technique gives remarkable results and the technique is relatively simple. your beautiful paper is sensitized and dried in dark area. Then you create your design/collage with plants, textures, found materials and place in a contact frame with the cyanotype paper. Exposures can be made in sunlight. Wash out your cyanotype in tap water and watch as your image is revealed.

### **3. Line Drawing Cyanotypes Thursday August 5**

Cyanotypes can be made using line drawings made by working through a layer of ink on a transparency film. The drawing on the film is placed onto the prepared cyanotype paper and placed in a contact frame. We can expose in sunlight or a UV unit. The cyanotypes are then washed out in tap water. Each participant will make an edition of 4 cyanotypes, with some work in progress proof prints.

### **4. Drawings to Prints Wednesday August 11**

Use a graphite pencil or pigment felt-tipped pen to create a drawing on drafting film which is exposed onto a photopolymer plate, and printed onto dampened paper to produce a beautiful intaglio print.



## ARTS SPACE



The Foundry Arts Space recently hosted two youth workshops where local artist Pete Conroy taught some basic skills in painting landscapes with oil paints. These workshops were supported by South West Arts Inc. All the young artists produced some fantastic landscapes and learnt a range of different techniques from Pete.



**EMAI's Echuca Moama Environmental Art Prize, 'Nature Speaks'** is still active although in recess due to the uncertainties posed by COVID. The sub committee met in May and will reconvene in the near future to bring ideas to the table about the Prize's future direction. Faye King.



### Our Social Media presence is growing,

Have you discovered 'Stories' yet? On Instagram when you click on the profile picture you'll reveal stories. On Facebook they are those long tall pictures at the top. It may look different on a desktop computer. Stories don't last forever like the normal posts and often they will be more lighthearted, fun, animated and informative.

### we're on Facebook

By clicking a reaction, sharing or making a comment our online presence somehow seems to spread wider...

### and...we have a YouTube channel!

Take a peek at it as well and please subscribe. You'll see new videos as they are uploaded. Our YouTube channel is a work in progress so please be kind. We would love to see some comments from you!

Here's how to search for us. Be sure to let us know when you've found us by following, liking and commenting!



The Foundry Arts Space



The Foundry Arts Space



EMAI The Foundry Arts Space

## VOLUNTEERS MATTER

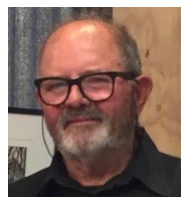


### Join the team at The Foundry Arts Space

We are seeking art-loving, community-focused individuals to join our volunteer program. There are many ways to become involved - sit the gallery, join the committee, help the team install and prepare the gallery space for exhibitions as well as working bees and marketing opportunities.

Volunteering at The Foundry Arts Space is a great way to gain experience and insights into running a community art gallery. It offers a great chance to talk to visitors and spruik the attributes of our local artists along with all the other great things Echuca and Moama have to offer.

There are many spaces you might fill so if this sounds like you or you would like to find out more call Kerry on 0413 119427, or email the Foundry on thefoundry@emai.org.au or phone 0475 448 452 and one of our members will contact you.



Jump in! Join the team!

contact Kerry Williams 0413119427

